



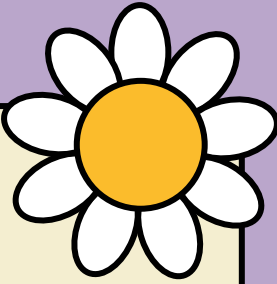
Registration 23-24

February 8, 2023



Signed Course Request Forms

**DUE: Friday, February 17th
in the Counseling Office**





Required Classes

Language

Arts

Math

Science

PE

Social
Studies

And...

Required Electives

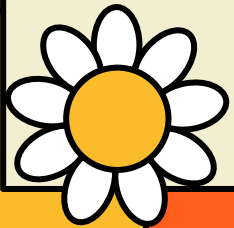
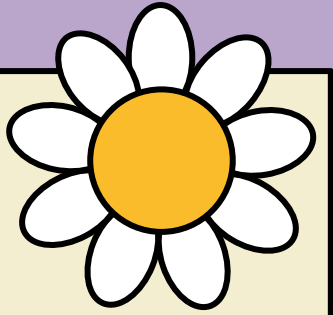
- Learning Center
- ELD
- Spanish Immersion

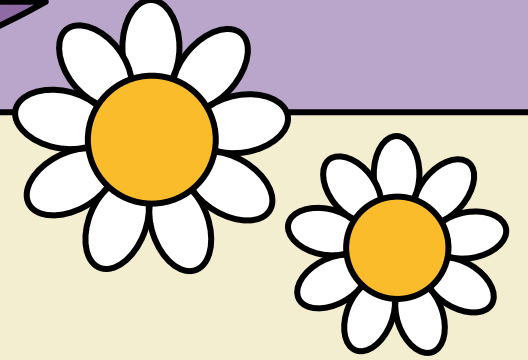
If you have a required elective and do not want to take any other electives, please select NO to zero period on the Google Form.



Other Electives

- Yearlong
- Quarter-long (7th Grade)
- Semester-long (8th Grade)





Band (yearlong)

- Flute, Clarinet, Saxophone, Trumpet, Trombone, Baritone, Tuba, Drums, or Xylophone
- Improve general music knowledge and instrument specific skills
- Play in concerts and special events like Back to School Night and Promotion





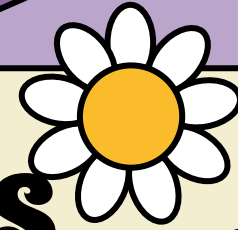
7th Grade General Electives

(Students will rotate through a new one each quarter except for the yearlong class)

- Ag Science
- STEAM
- Music Appreciation
- Drama
- Crafts
- Band (yearlong)

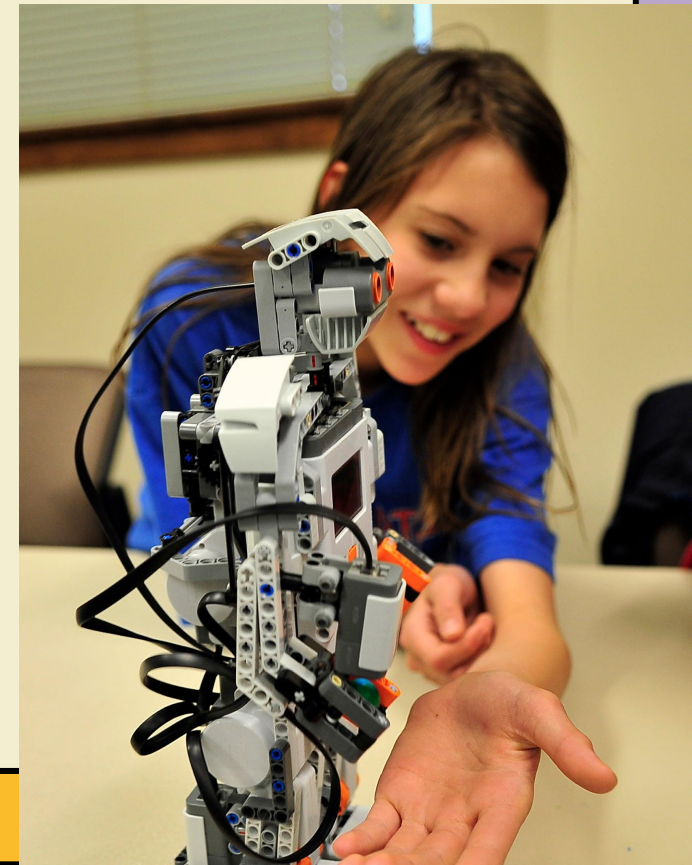


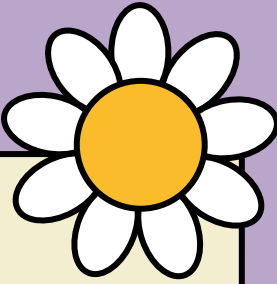
8th Grade General Electives



(Students will rotate through a new one each semester except for the yearlong classes)

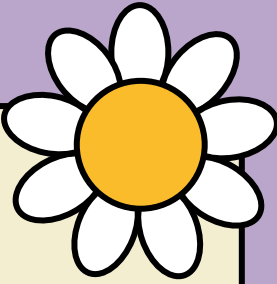
- Ag Science
- STEAM
- Drama
- Crafts
- Leadership
- AVID
- WEB (yearlong)
- Band (yearlong)



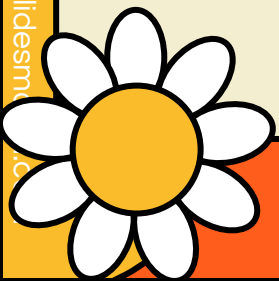


Course Descriptions

What is WEB? (yearlong)

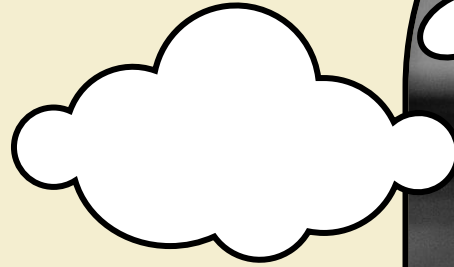
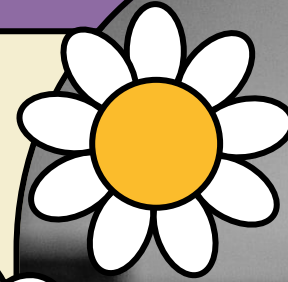


- Mentor 6th/7th graders
- Support 6th/7th grade academic success and character development through classroom visits
- Increase student engagement and promote positive school climate



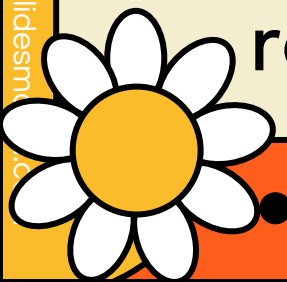
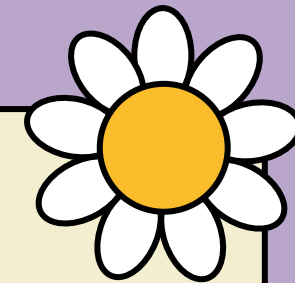
What is AVID?

- College/career exploration
- Improve your organization and public speaking skills
- Teambuilding activities/games
- Field Trips
- Guest Speakers



What is STEAM?

STEAM stands for Science, Technology, Engineering, Art and Mathematics. In this elective we will do a lot of hands-on activities. Students will be allowed to choose from a wide variety of projects, ranging from coding to designing roller coasters.



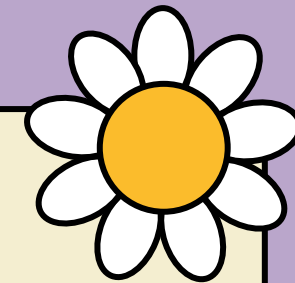
What is Ag Science?

The goal of this class is to introduce students to sustainable agricultural models through improving soil health. Classes will investigate local farmers and the role they play in producing sustainable foods all while combating climate change. Students are to draw relationships between human population, food production, and decline of soil health. Students will learn the fundamentals of soils and how to analyze soil health properties. They will end the unit by creating a project or prototype to communicate a solution.



What is Drama?

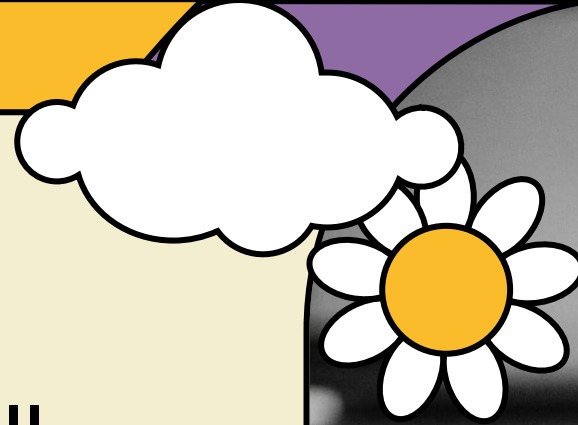
An introductory theatre course, which allows students to explore different aspects of theatre - both on stage and behind the scenes. The aim of this class is not to train students to become actors or directors but to provide an opportunity for students to be familiar with different elements of theatre through the exploration of their own creativity. Coursework may include mime, storytelling, monologues, improvisation and theatre games, as well as the performance of short plays. Active participation in the class will encourage students to develop communication and performance skills, self-confidence, and the ability to work well with others.



What is Crafts?

In this elective, students will learn the basics of art and use this foundation for a variety of creative activities and projects.

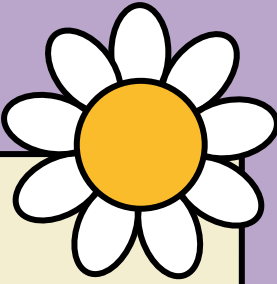
Students don't have to be an artist to do well in this class--
EFFORT and a **GROWTH MINDSET**
will get them far!



What is Leadership?

The Leadership Class focuses on developing many skills and responsibilities essential for students to be successful in school and in society. Leadership, organization, collaboration, communication, financial management, interpersonal relations, public speaking, planning, Parliamentary Procedure, and time management are not only taught, but practiced. Students will learn in the most hands-on approach – by doing it all and assessing the outcome. By utilizing a Common Core instructional approach, the Leadership Class will foster an environment where students strive to create a positive and inclusive middle school experience for all Cunha students. An application and grade point average (GPA) requirement is in place for eligibility.

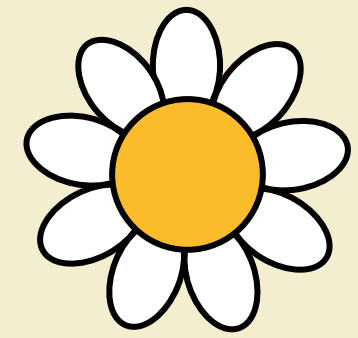




Zero Period

- Optional
- Year-long commitment
 - Not guaranteed
 - Starts at 7:52 am





Follow these steps:

1.

Fill out the Google Form.

2.

Elther submit it now or at home with parents.

3.

Print out the email from Google Forms.

4.

Parents may make any changes as needed by writing on the form prior to signing.

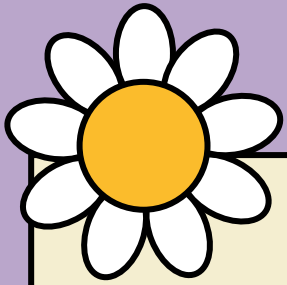
5.

Submit signed copy to the counselors in the office.





Questions?



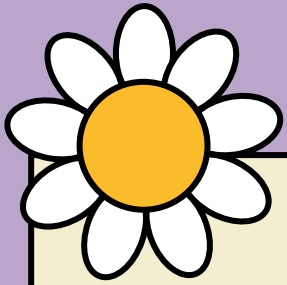
In a new tab, type in:

Current 6th Grader:

bit.ly/cunha7thgradeclases

Current 7th Grader:

bit.ly/cunha8



FAQ's:

Q. What if my student wants to take two electives?

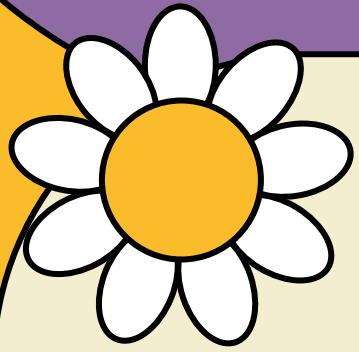
A. In order to make room for two electives, students will have to take zero period.

Q. What are the requirements for Independent Study PE and how can I apply?

A. You can find more information about ISPE on the Cunha website under Counseling > Counseling News

Q. What if my student wants to take an advanced math class in 8th grade?

A. Math advancement will be discussed in your student's math class in the spring. The decision will be based on state test scores, grades, teacher feedback, and math benchmark scores.



To print at school:

1. After submitting, open your school Gmail
2. Click on the email from Google Forms
3. Scroll down to the bottom of the email
4. Click "Forward"
5. Type in "Grover" and select "Dena Grover"
6. Hit send and Ms. Grover will print out your form